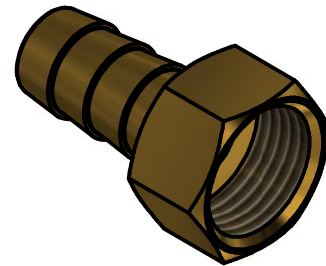
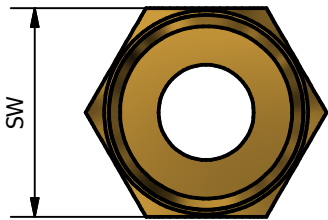
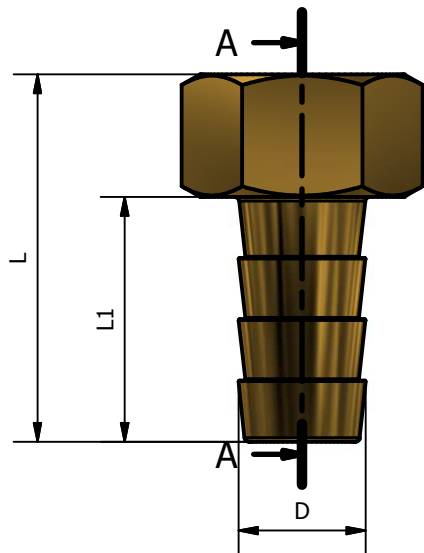


A-A (1.2 : 1)



| CODE | SIZE | G | D | L | L1 | SW |
|-----------|----------|-------|----|------|----|------|
| 469E 1410 | 1/4x10 | 1/4 | 10 | 37 | 24 | 17 |
| 469E 1414 | 1/4x14 | 1/4 | 14 | 37 | 24 | 17 |
| 469E 3810 | 3/8x10 | 3/8 | 10 | 37 | 24 | 19 |
| 469E 3812 | 3/8x12 | 3/8 | 12 | 37 | 24 | 19 |
| 469E 3814 | 3/8x14 | 3/8 | 14 | 37 | 24 | 19 |
| 469E 1210 | 1/2x10 | 1/2 | 10 | 37,5 | 24 | 23 |
| 469E 1212 | 1/2x12 | 1/2 | 12 | 37,5 | 24 | 23 |
| 469E 1214 | 1/2x14 | 1/2 | 14 | 40,5 | 27 | 23 |
| 469E 1220 | 1/2x20 | 1/2 | 20 | 40,5 | 27 | 23 |
| 469E 3420 | 3/4x20 | 3/4 | 20 | 43 | 27 | 30 |
| 469E 0125 | 1"x25 | 1" | 25 | 51 | 35 | 38 |
| 469E P430 | 1"1/4x30 | 1"1/4 | 30 | 51,5 | 35 | 45,5 |
| 469E P240 | 1"1/2x40 | 1"1/2 | 40 | 64 | 47 | 51,5 |
| 469E 0250 | 2"x50 | 2" | 50 | 75 | 57 | 63,5 |

| | |
|--|--------|
| WORKING PRESSURE MAX from 1/8 to 1"1/4 | 16 BAR |
| WORKING PRESSURE MAX from 1"1/2 to 2" | 10 BAR |
| WORKING TEMPERATURE MAX | 120°C |

| | |
|-----------------------------|--|
| CONFORMITY | |
| 1) DM 174 del 6 Aprile 2004 | |
| 2) UNI EN ISO 228 | |
| 3) UNI EN 1254-4 | |

| | | | |
|--|-----------------|--|-------------------|
| 00 | Prima emissione | Delaini M. | 08/02/2008 |
| Rev. | Nota Revisione | Approvatore | Data Approvazione |
| Toll Gen: | JS13 | Stato sup.: | Giallo Tornito |
| Filetto: | ISO 228 | Note tecniche: | |
| Peso lavorato: | Peso grezzo: | N° stampo: | |
| Materiale: CW 617N EN12164 | | Disegnatore: Delaini P. | Data: 08/02/2008 |
| TDM Brass s.r.l via Artigiani , 7-9 25030 Maclodio BS Italy tel +39 030 9972217 fax 030 9787089 www.tdmbrass.it email info@tdmbrass.it | |  <i>Italian Fittings</i> | |

Codice: 469E scheda

Descrizione: Female hose nipple